

Ski  **Banff
Lake Louise
Sunshine**

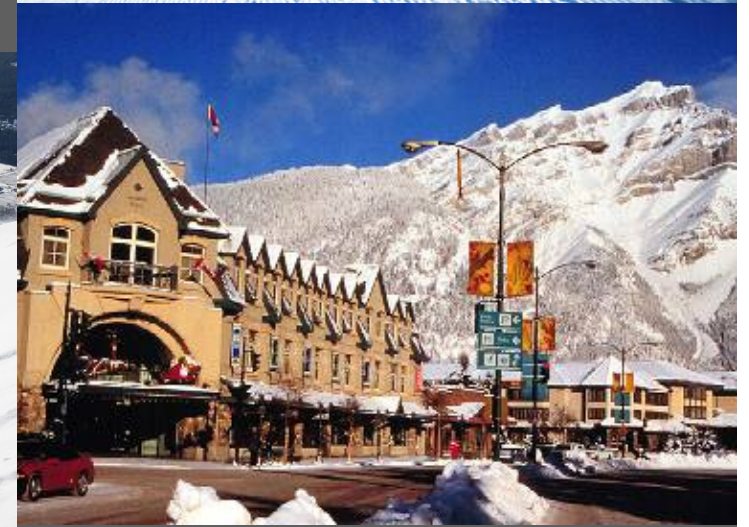


Banff-Lake Louise The Canadian Rockies



Banff National Park

- Canada's first national park
- United Nations World Heritage Site
- Welcoming visitors since the 1880's
- Where REAL happens...
- Three ski resorts – almost 8,000 acres accessible on one tri-area lift ticket.
- Includes frequent return shuttle transportation between hotels in Banff and Lake Louise and all three ski resorts.
- Rated #1 destination in Canada and #9 in the world in the TripAdvisor.com *2008 Traveler's Choice Destination Awards*



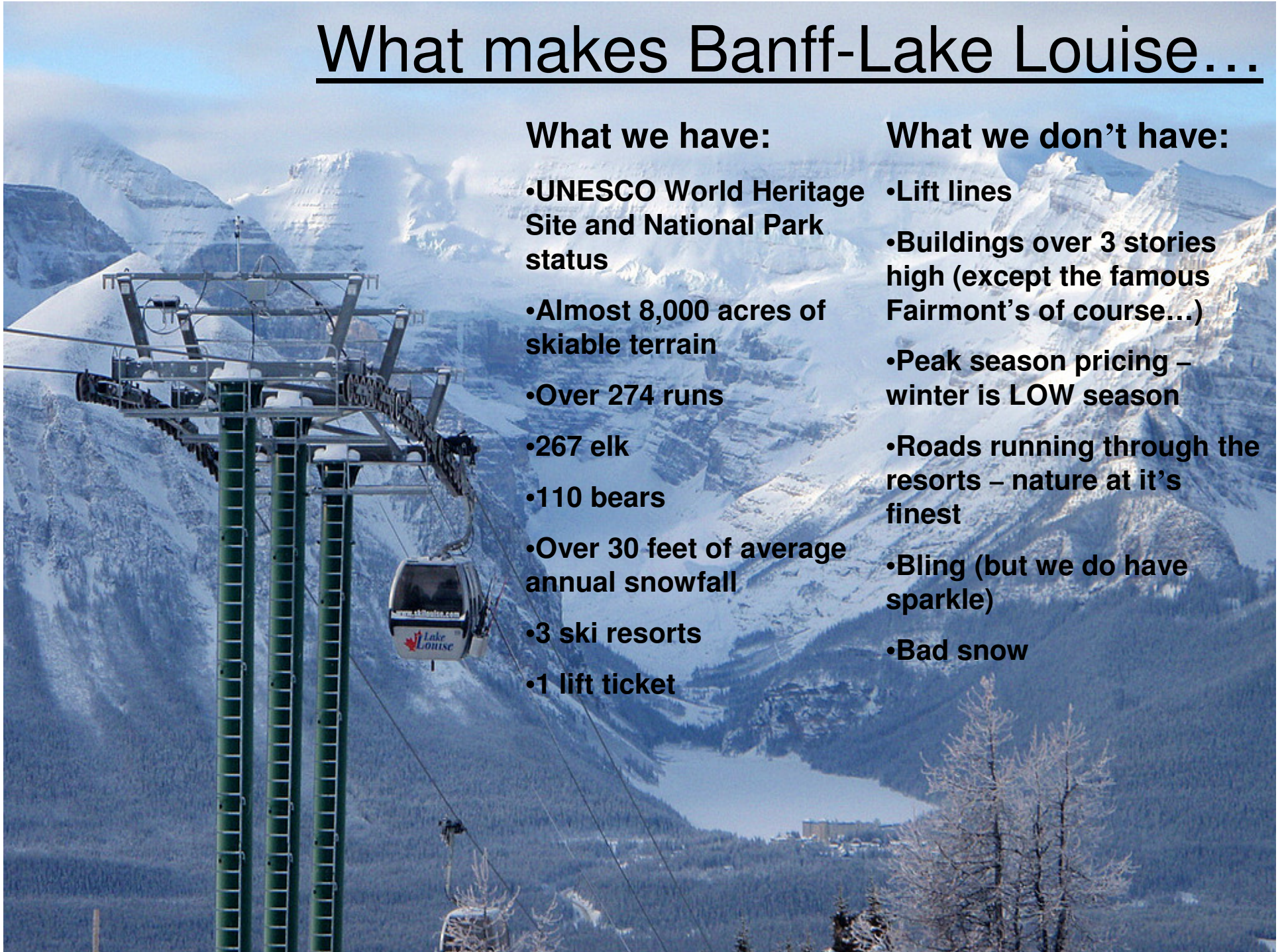
What makes Banff-Lake Louise...

What we have:

- UNESCO World Heritage Site and National Park status
- Almost 8,000 acres of skiable terrain
- Over 274 runs
- 267 elk
- 110 bears
- Over 30 feet of average annual snowfall
- 3 ski resorts
- 1 lift ticket

What we don't have:

- Lift lines
- Buildings over 3 stories high (except the famous Fairmont's of course...)
- Peak season pricing – winter is LOW season
- Roads running through the resorts – nature at it's finest
- Bling (but we do have sparkle)
- Bad snow

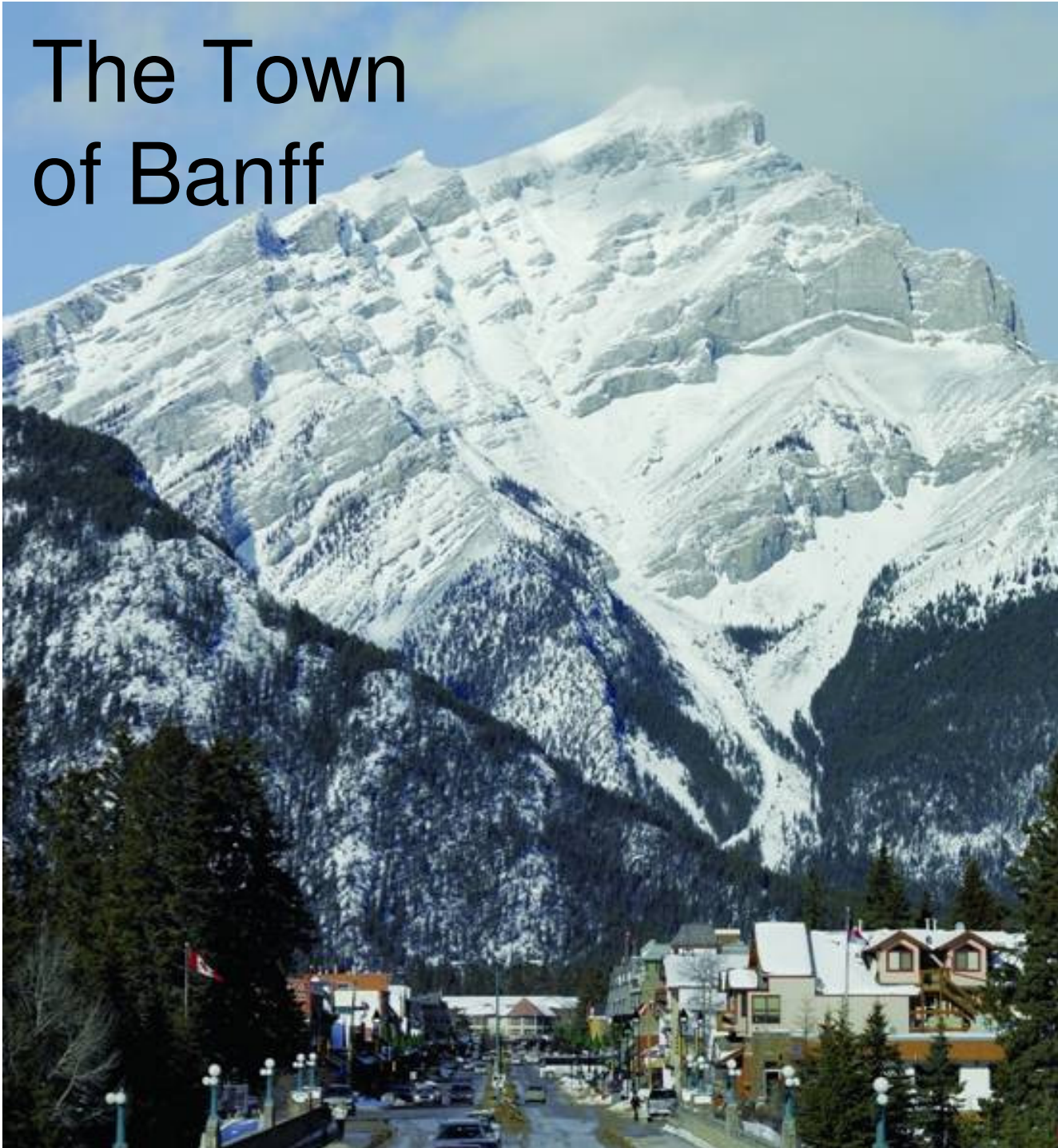


Getting to Banff-Lake Louise



Banff National Park is an easy drive 90 minutes west from Calgary International Airport.

The Town of Banff



140 nightspots

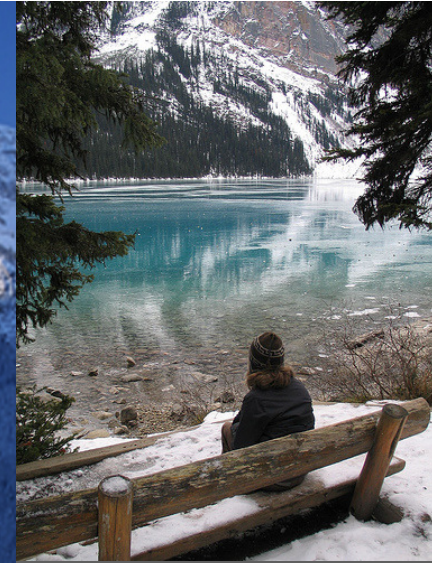
200 shopping options

World-class spas

Relax (or stay out late) in
Canada's classic mountain town



The Village of Lake Louise



Soaring mountains & abundant wildlife.
Award winning guided mountain heritage program.
Broad range of dining, from deli to exquisite.
Relax and enjoy all there is to offer.





Lake Louise

Lake Louise



NORQUAY
BANFF, ALBERTA

Banff



The tri-area lift ticket: 3 resorts — 1 lift ticket

Murray Hay

Mt. Norquay

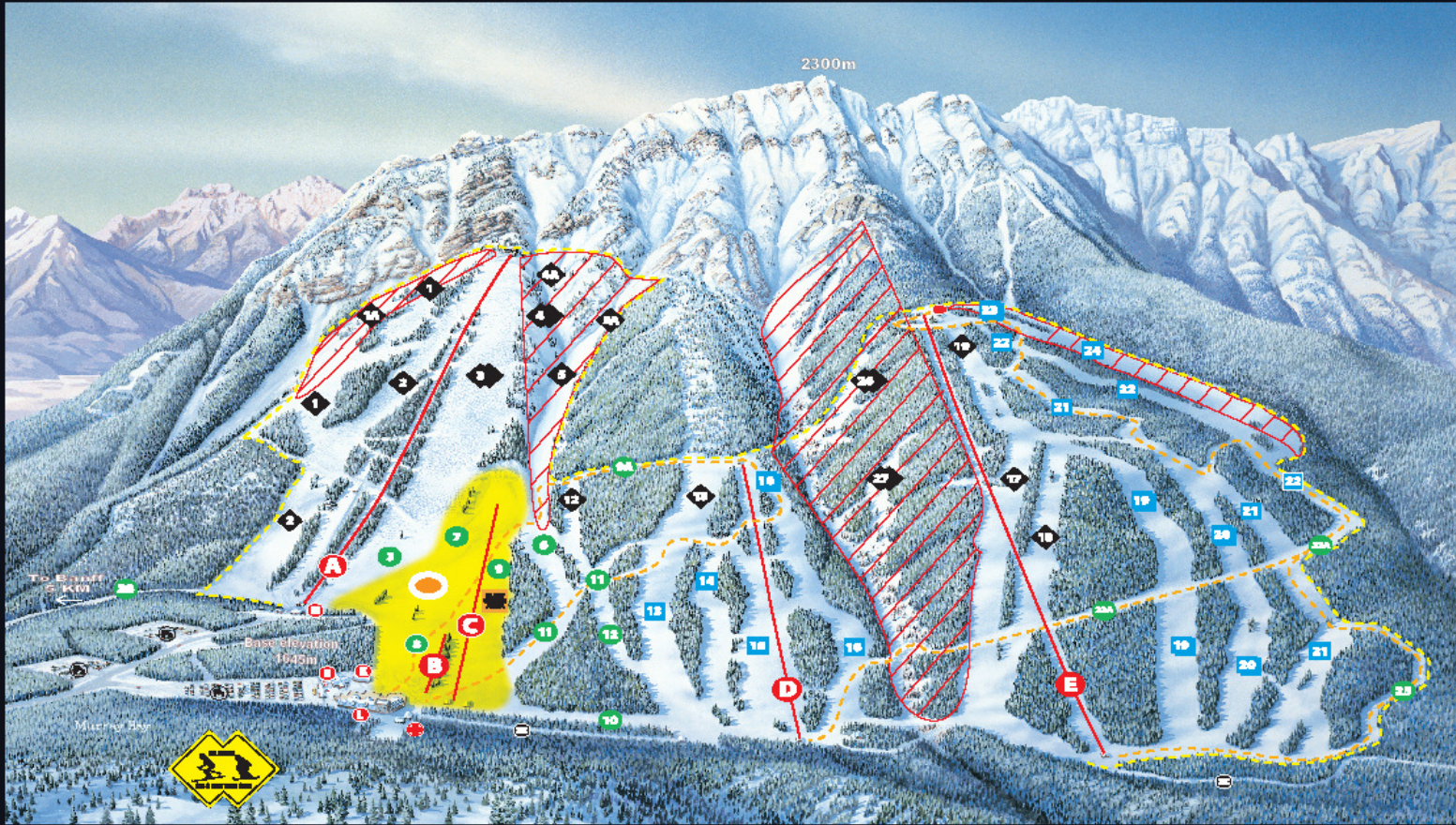


Mt. Norquay, visible from Banff and conveniently located just 6km from downtown, is minutes away from your hotel and has something for everyone. Like groomed cruising runs? Rip it up on the Mystic Ridge. Like jumps? Check out the terrain park! Like steeps? Take on the Lone Pine! Your tri-area lift ticket also includes night skiing/riding on Wednesday & Friday nights (January – March).

Mt. Norquay has just what you are looking for. Mt. Norquay — a Banff family tradition since 1926.



MT NORQUAY



- NORTH AMERICAN**
Fixed grip double chair
Vertical rise - 500m (1,640')
Length - 900m (2,953')
- North American**
Big Horn Basin
Memorial Bowl
The Lone Pine
Sun Run
Herman's Bowl
Norquay Meadows
Norquay Gully
Ski out to Banff
- SUNDANCE CONVEYOR**
Surface lift
Vertical rise - 120m (394')
Length - 61m (200')
- SHENANIGAN**
- CASCADE**
Fixed grip quad chair
Vertical rise - 700m (2,297')
Length - 800m (2,625')
- Valley of Ten**
Temptation
Speculation
Scooter
- SPIRIT**
Fixed grip quad chair
Vertical rise - 700m (2,297')
Length - 800m (2,625')
- Spirit High Traverse**
Eyes Alley
Conspiration
Bob's Run
Sherroom
Hoodoo
Abracadabra
- MYSTIC EXPRESS**
High speed quad chair
Vertical rise - 890m (2,920')
Length - 1,010m (3,330')
- Black Magic**
Ke-Pool
Giver Grandi
Jusion
Knight Flight
Barishee
Mystic Egress
TIP
Euno's Gully
Easy Out
Suni Chutes
Sheep Chutes
- Cascade Lodge**
- First Aid**
- Wet's Place Daycare**
- Old Norquay Lodge**
- Parcs Canada Trail**
- Night Skiing Area**
- Snowboard Park**
- Aviation Hazard Area**
(Subject to Change)
- Patrol Boundary**
- Least Difficult**



Sunshine Village

Discover an alpine playground of powder-filled bowls, wide-open runs groomed for cruising, and steep, deep chutes at Canada's highest elevated resort.

An annual snowfall of over 360 inches (915cm) gives Sunshine awesome skiing and riding from mid-November to late May, on 107 named runs spread over 3,358 acres.

Lake Louise Ski Area



Lake Louise Ski Area has 4 mountain faces, 4 day lodges and 4,200 acres of skiable terrain, with beginner, intermediate and advanced runs down from all 9 chairs – allowing all levels to ski together. Add award-winning scenery and loads of ‘elbow room’ on the steeps and cruisers, and you’ll understand why Lake Louise is a beloved world-class destination.

Snow? Check

Light, dry Canadian Rockies snow.
You'll find it here, every year,
from mid November to late May.

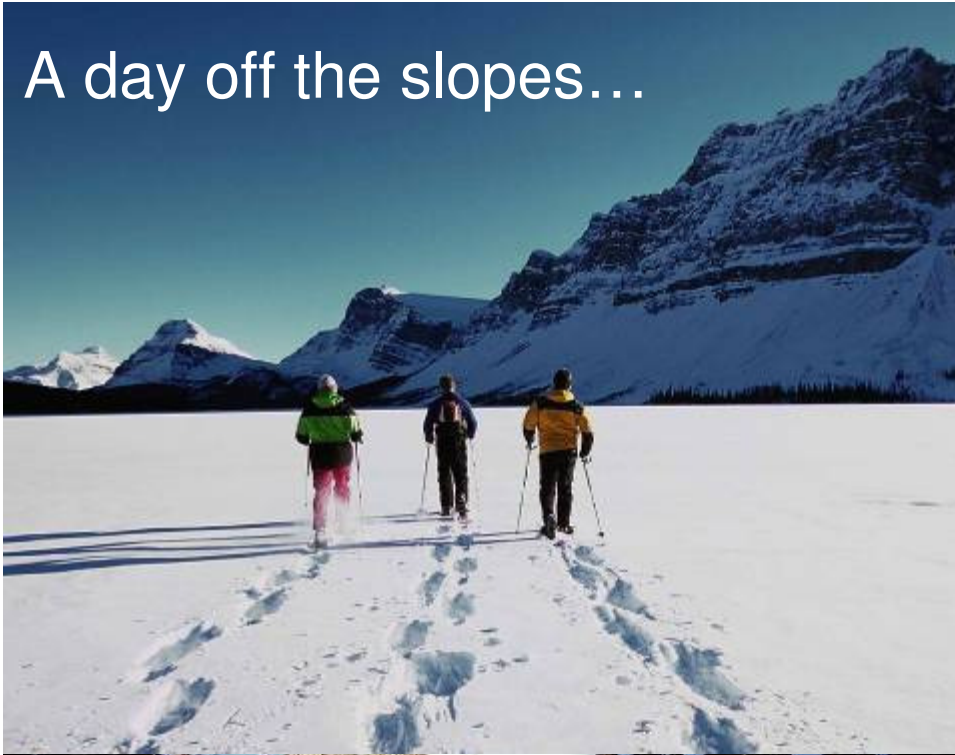




Other Services

- The Banff Ski Hub
 - tri-area retail store
 - purchase all of your ski area logo gear
 - organize rental equipment
 - helmets, sunglasses, gloves, thermals
- Club Ski
 - 3 days of professional guiding
 - ski with the same pro
 - all three resorts (starts Sun & Thurs)
 - improve skills in fun group environment
- All resorts offer
 - ski lockers
 - rental equipment & tuning
 - retail shops, cafeterias & restaurants
 - fully licensed bars
 - snow schools
- FREE guided tours of the resorts
 - run daily
 - ski with locals who love to show the area
 - ski the best on-piste runs
 - no bookings required

A day off the slopes...



Why Banff-Lake Louise?

- > great value – winter is the **LOW SEASON!**
- > three ski areas to experience with one lift ticket
- > reliable, consistent snow year after year after year
- > unique & inspiring surroundings – there is only **ONE Banff National Park**





Thanks!

